

Protecting our Waters from Aquatic Invasive Species: A Collaborative Approach in the Canadian Columbia Basin

Jennifer Vogel, Executive Director
Central Kootenay Invasive Species Society

On Behalf of the
Canadian Columbia Basin Regional Invasive Species Organizations

May 2015

CANADIAN COLUMBIA BASIN REGIONAL
FRAMEWORK FOR AN AQUATIC INVASIVE SPECIES
PROGRAM: 2015 TO 2020



Prepared for Columbia Basin Trust |
Prepared by: Juliet Craig, R.P.Bio., P.Ag.

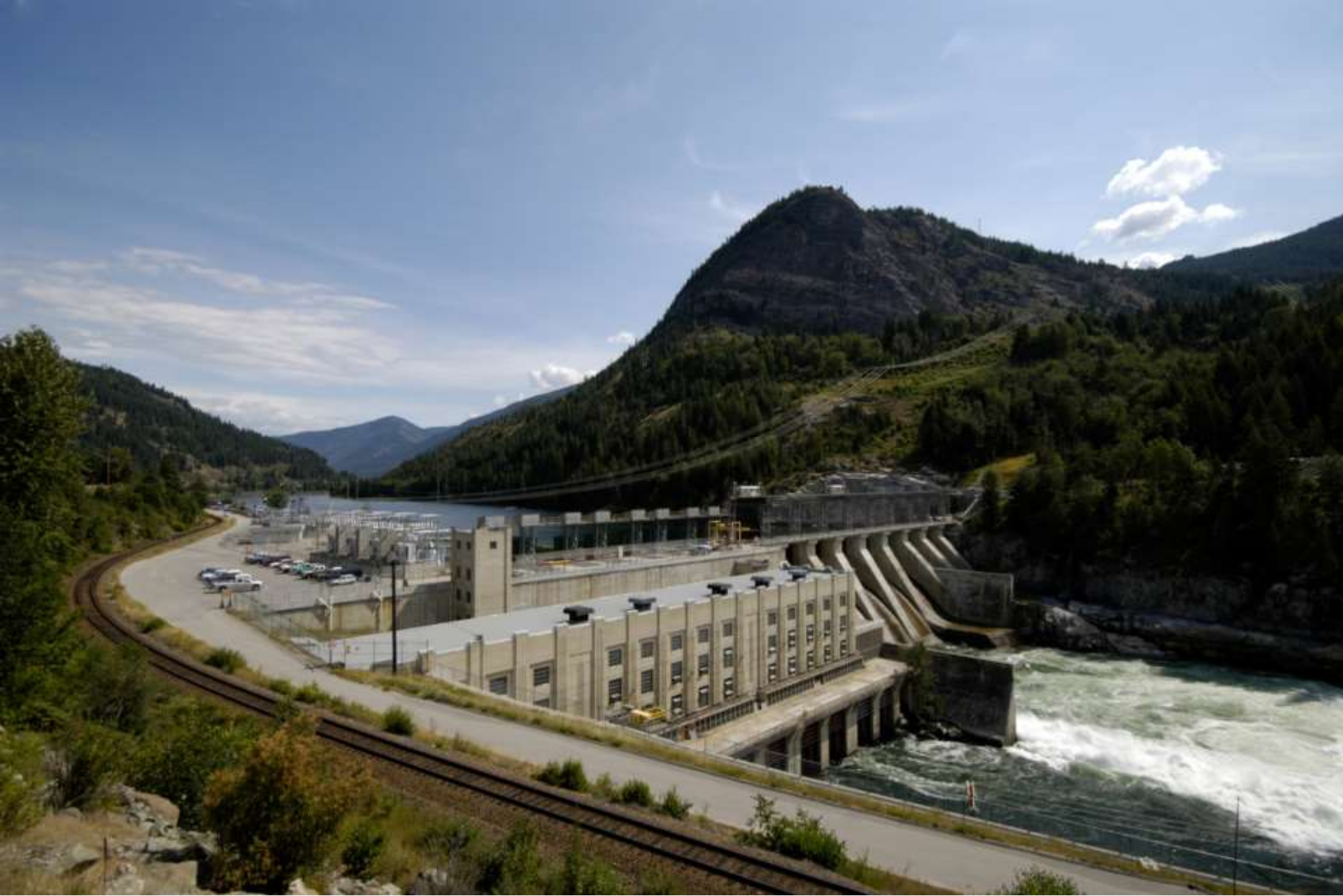
Definition of “the Basin”



Map by Kmusser - self-made, based on USGS and Digital Chart of the World data.. Licensed under CC BY-SA 3.0 via Wikimedia Commons - <http://commons.wikimedia.org/wiki/File:Columbiarivermap.png#mediaviewer/File:Columbiarivermap.png>.

Why create this framework?



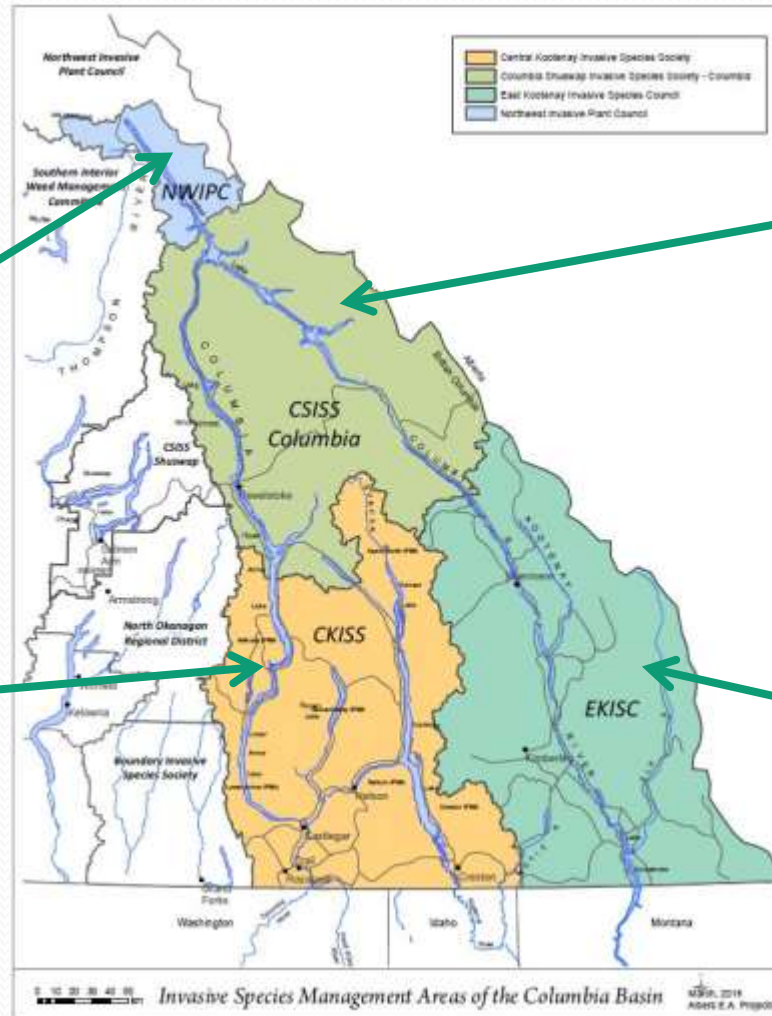


http://en.wikipedia.org/wiki/Zebra_mussel

Regional Invasive Species Organizations in BC



Regional Invasive Species Organizations in Basin



Columbia Basin Trust Strategic Plan

Help reduce the threat
of invasive species to
terrestrial and aquatic
ecosystems



**Environment
Strategic Plan**
2014 – 2019

Steering Committee



Canada 



Teck



Purpose of Program

- To promote a **proactive, strategic, collaborative** and **coordinated** approach to AIS prevention and management
- Designed for the **AIS program, regional invasive species organizations and local partners**



Parrot-feather

Five Program Areas



#1: Coordination and Collaboration

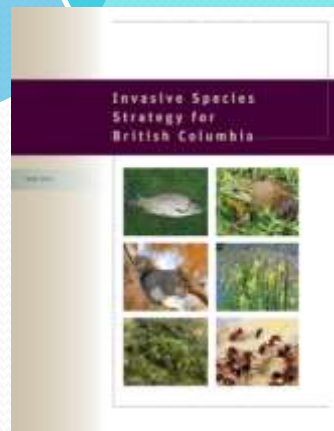


Provincial
Government

Province-wide
(ISCBC)

Regional
Invasive
Species
Organizations

Local Partners
(stewardship
groups)



#1: Coordination and Collaboration

1. Establish **a coordinated AIS Program** in the Basin, building on existing efforts and introducing new ones
2. Facilitate **coordinated priorities and activities** for maximum efficiency and effectiveness
3. Identify models and options for **long-term stable funding**
4. Evaluate and **celebrate success**



Photo credit: Dave De Rosa

#2: Outreach and Prevention

Illustration:
Columbia River
Fisheries Program
Office

Prevent the Pathway!



Human Pathways of Introduction and Spread



Photos from the internet

#2: Outreach and Prevention

1. Implement successful **behaviour change programs** of key pathways with consistent and proven messages
2. Reduce the potential for AIS-fouled boats to enter local water bodies through **education**
3. **Engage stewardship groups, community organizations, educational institutions and industry** for AIS outreach
4. Engage **local governments and industry** in AIS issues



2: Outreach and Prevention

1. Implement successful **behaviour change programs** of key pathways with **consistent** and proven messages



#3: Watercraft Inspection and Decontamination

1. Reduce the potential for AIS-fouled boats to enter local water bodies through **watercraft inspection and decontamination**
2. **Increase detection** of mussel-infested watercraft



#4: Research and Monitoring

1. Develop a coordinated, spatially comprehensive **monitoring plan** to monitor areas at high risk of AIS introductions
2. Promote and utilise **standardized** monitoring, data sharing and reporting
3. **Increase opportunities** to participate in AIS monitoring
4. Promote and facilitate **AIS research**



Photo credit: Jennifer Vogel



Photo credit: Robyn Hooper



Photo credit: Matt Chilakos

Ranking Matrix

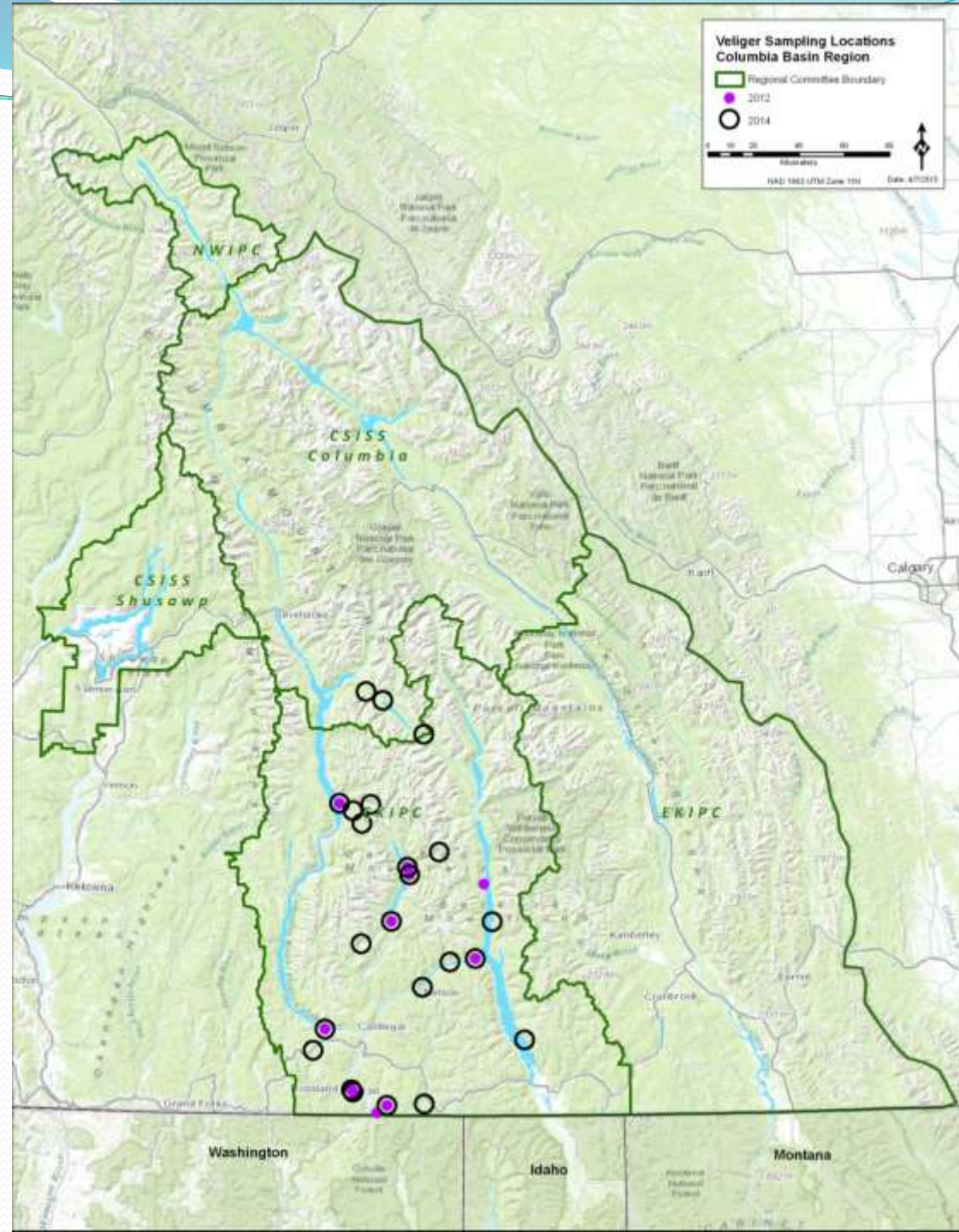
- # boat launches
- Moorage
- Water-based events
- Ease of access
- Proximity to source population
- Species at risk
- Hydro electric facilities
- Recreation
- Size of water body



#4: Research and Monitoring



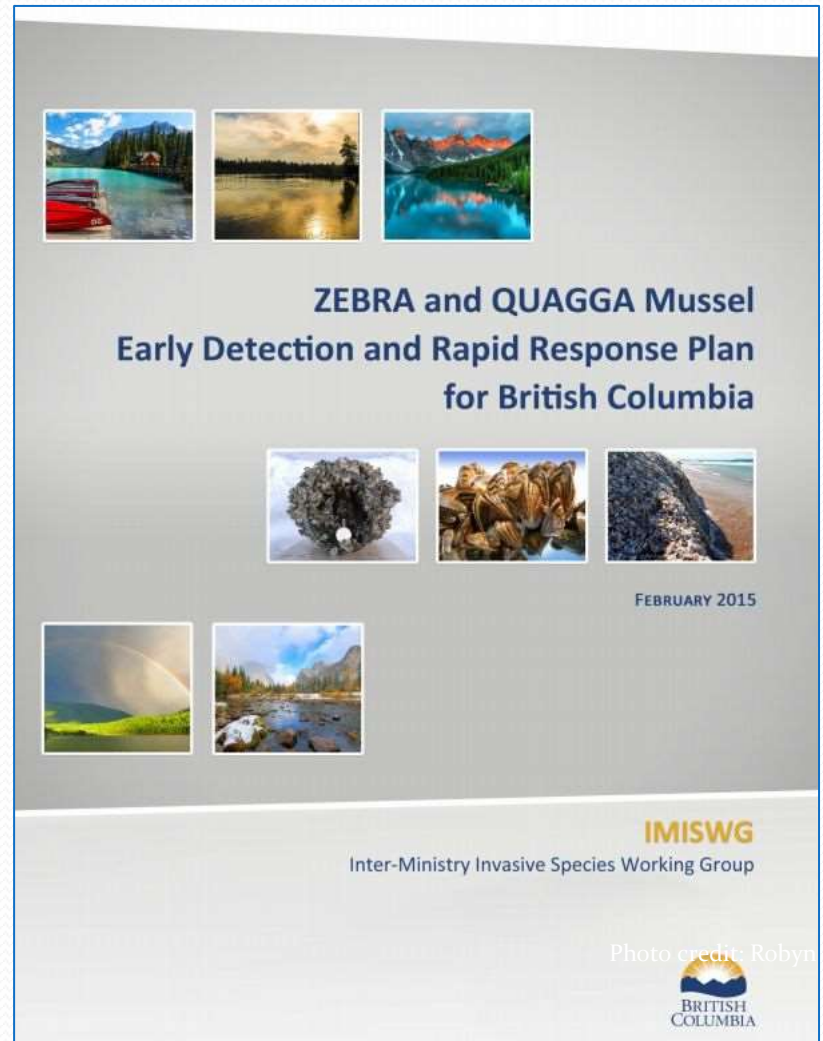
Photo by: Brian Zytaruk



#5: Response and Management

1. Follow the **provincial response plan** for zebra and quagga mussels (ZQM)
2. Coordinate with relevant partners to participate in **response strategy** for high priority AIS as required
3. **Contain and manage existing AIS infestations** to reduce impacts and spread

Provincial RAPP Line:
1-877-952-7277




Summary

Exciting program for enhanced
Aquatic Invasive Species
prevention and management
within the Canadian Columbia
Basin



Questions?





Thank you to the
Columbia Basin Trust
and the
Ministry of Forests, Lands, and
Natural Resource Operations